

DigiCert® CertCentral Manager ServiceNow™ Integration



Manage the entire lifecycle of your TLS/SSL certificates with DigiCert in ServiceNow.

At-a-glance

DigiCert CertCentral® Manager is now available in the [ServiceNow app store](#), enabling businesses to manage their TLS/SSL certificates in their existing IT workflows—all without switching applications.

ServiceNow continues to be the leader in IT automation, where most enterprise IT projects and assets are managed. Previously, managing a certificate workflow within ServiceNow required multiple tools and numerous manual tasks. But with the new DigiCert CertCentral Manager app, businesses can seamlessly manage TLS in one place, delivering faster certificate issuance times, preventing certificate expirations and reducing manual tasks.

Features:

- Manage TLS/SSL certificates
- Track and find certificates
- Approve, reject or edit certificate requests
- Manage users and permissions

Benefits:

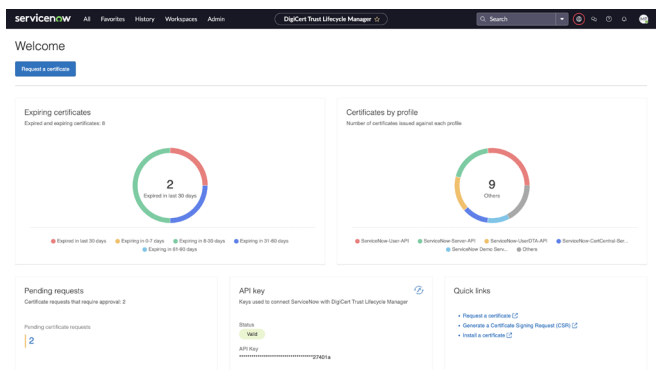
- Conveniently remain in ServiceNow
- Streamline deployment of new certificates
- Avoid security outages
- Speed up certificate delivery

Simplified and organized

In the past, managing certificates was as varied as organizations themselves. The spectrum of approaches ranged from zero management to managed but manual. Using spreadsheets and emails didn't just slow the process down, it increased the risk of human error, certificate expiration and exposure. With CertCentral in ServiceNow, management and policies are centralized and optimized.

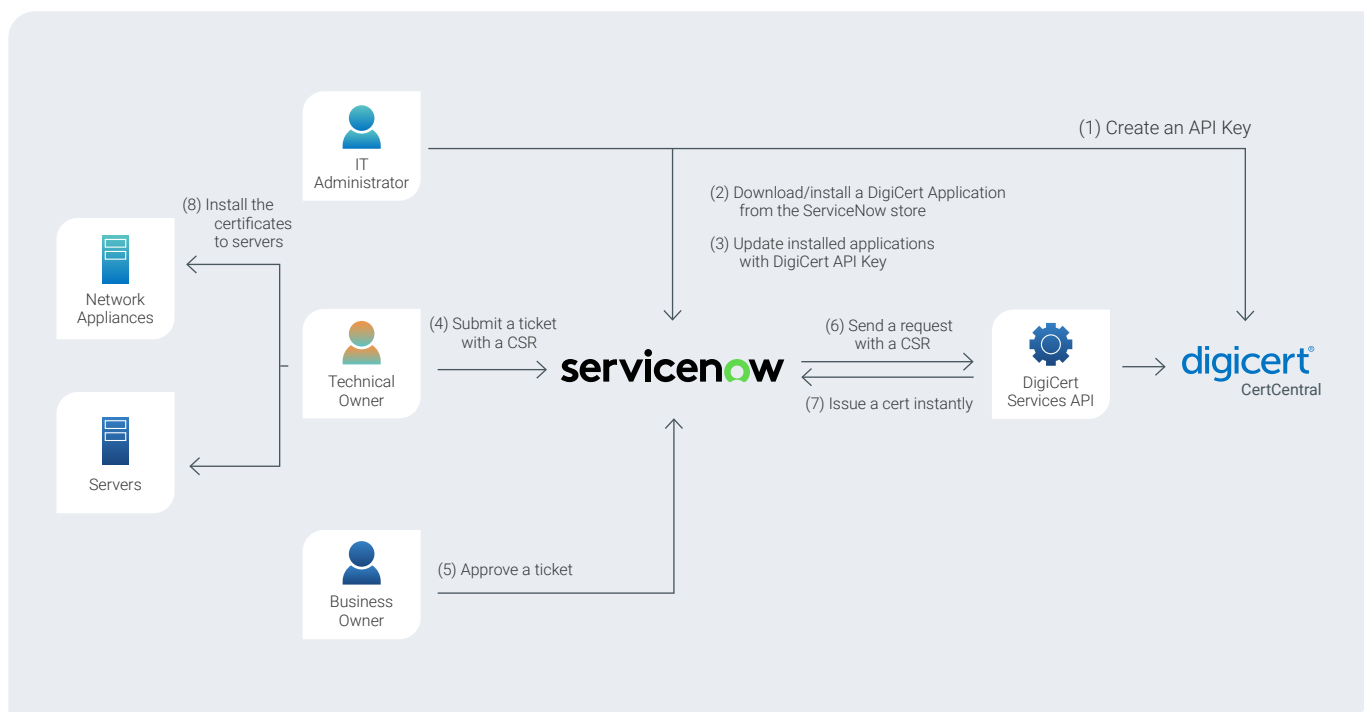
During set-up, IT administrators can establish clear roles of administrators, approvers and requesters. Approved requests are immediately converted to orders, making certificates ready for download faster—nearly instantaneous for pre-validated organizations. By assigning permissions to authorized users, they can also edit and expedite certificates as needed. And when roles need to change, access can be changed immediately.

And by customizing fields based on certificate purpose, location, owner, expiration, etc., administrators can quickly organize, locate and monitor every certificate in your organization.



Getting started

Installation is simple. First, administrators download a CertCentral API key. Next, download the [DigiCert CertCentral Manager app](#) in the ServiceNow store and install it. Then, add the CertCentral API key and update installed applications with the key. Once completed, an organization's CertCentral settings and policies are immediately available, however administrators will need to add users and assign roles.



Click [here](#) to go to the ServiceNow store to download the DigiCert CertCentral Manager app. Also, contact your account manager to enable CertCentral in ServiceNow at: 1-866-893-6565 ext. 4